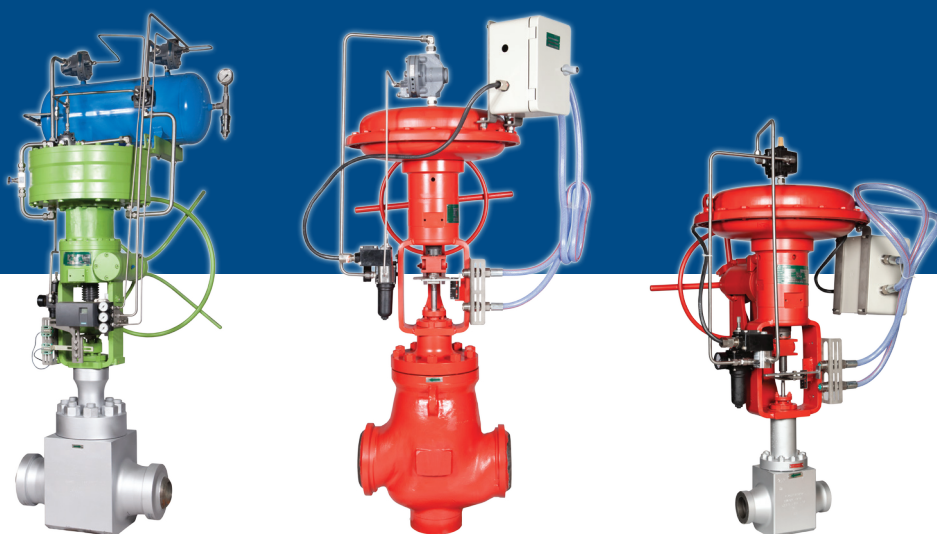


Globe Control Valves



L&T Valves

Larsen & Toubro manufactures a wide range of globe-type control valves for the power and hydrocarbon industries. The range comprises valves in straight pattern, angle and three-way body configurations, in ASME classes from 150 to 2500, in sizes up to 24" (600 mm).

L&T Control Valves are offered in a variety of materials, with actuation options and accessories to suit customer requirements.

Compliance Standards

Parameter		Standard
Design	Pressure Temperature Rating	ASME B16.34
	Leakage Class	ANSI/ FCI 70-2
	Hydrodynamic Noise	IEC 60534-8-4
	Aerodynamic Noise	IEC 60534-8-3
Ends	End Flange Dimensions	ASME B16.5
	Butt-weld End Dimensions	ASME B16.25
Testing	Hydrotesting	ISA S75.19
	C _v Testing	ISA-75.02.01

Materials of Construction

Body/ Bonnet	Trim
A216 Gr. WCB /WCC/ A105	SS 410/ SS 410 + HF
A352 Gr. LCB /LCC/ A350 Gr. LF2	SS 420
A217 Gr. WC6/ A182 Gr. F11 Cl. 2	SS 422
A217 Gr. WC9/ A182 Gr. F22 Cl. 3	SS 316 + HF
A217 Gr. C12A/ A182 Gr. F91	SS 316L + HF
A351 Gr. CF8/ A182 Gr. F304	17-4 PH
A351 Gr. CF8M/ A182 Gr. F316	F91 + HF
A351 Gr. CF3/ A182 Gr. F304L	
A351 Gr. CF3M/ A182 Gr. F316L	

*HF - Hard-Faced with Stellite 6 or equivalent

Seat & Trim Options:

- Seat Type - Quick Change (default)
- Optional Seat Type - Welded Seat and Threaded Seat
- Plug Options - Balanced and Unbalanced
- Leakage Class - Up to Class V
- Trim Types - Contoured, V-Port, Cage and Multi-Cage
- Trim Characteristics - Linear, Equal Percentage and Quick Opening

Actuator Options:

- Pneumatic - Diaphragm
- Pneumatic - Piston
- Hydraulic
- Electrical



Product Range:



Valves for General Service

Size: 1" (25 mm) - 24" (600 mm)
 Class: 150 - 2500
 Trim type: Contoured & V Port
 Plug options: Balanced & Unbalanced
 Flow direction: Open & Close

Applications:

- Modulating and On-Off
- Slurry and Clean service



Severe Service Valves

Size: 1" (25 mm) - 24" (600 mm)
 Class: 150 - 2500
 Trim type: Multi-cage
 Plug options: Balanced & Unbalanced
 Flow direction: Open & Close

Applications:

- Modulating
- High Pressure Drop
- Noise Attenuation
- Anti-cavitation
- Clean Service



Low-Flow Applications

Size: ½" (12 mm) - 1" (25 mm)
 Class: 150 - 2500
 Trim type: Contoured
 Plug options: Unbalanced
 Flow direction: Open

Applications:

- Modulating
- Low Flow Rate
- High Viscosity Fluids
- Clean Service

Special Products

- Three-way Valve
- Drain Valve

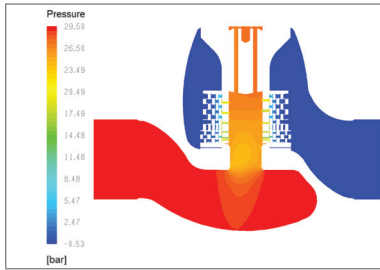
L&T Valves

L&T Valves Limited (Formerly Audco India Limited) is a wholly owned subsidiary of Larsen & Toubro. Backed by an fifty-year track-record of excellence and world-leading innovation, the company provides engineered flow-control solutions for key sectors of the economy such as oil & gas, power, petrochemicals, chemicals, fertilizers and pharmaceuticals.

The valves are designed using state-of-the-art 3D design, simulation and analysis software. Finite Element Analysis (FEA) and Computational Fluid Dynamics (CFD) are used to fine-tune product performance. Rigorous prototype tests - both in-house and at advanced flowcontrol research establishments - ensure that the customised solutions meet customer expectations.

L&T Valves Limited is synonymous with world-class manufacturing and quality assurance systems. Our plants have the agility and flexibility to deliver a wide variety of valves against time constraints and dynamic customer demands. International safety, health and environment standards govern every phase of the manufacturing process.

L&T Valves Limited distribution network spans the globe, partnering some of the largest valve distribution companies in the world. In India, L&T Valves Limited has a presence in all major industrial centres through a network of offices, authorised stockists, automation centres and service franchisees.



Larsen & Toubro is a USD 14 billion technology, engineering, construction, manufacturing and financial services conglomerate, with global operations. Its products and systems are marketed in over 30 countries worldwide. L&T is one of the largest and most respected companies in India's private sector. A strong, customer-focused approach and the constant quest for top-class quality have enabled L&T to attain and sustain leadership in its major lines of business over seven decades.



L&T Valves Limited

Mount - Poonamallee Road, Manapakkam, Chennai 600 089, INDIA

Tel. : + 91 44 2249 8201 Email: ContactUs@Lntvalves.com www.Lntvalves.com CIN Number: U74999MH1961PLC012188

Registered Office: L&T House, N. M. Marg, Ballard Estate, Mumbai - 400 001, INDIA

Publication Number: VF006-R2/0614

As we continuously endeavour to improve our products, the data given herein is subject to change.
Please refer www.Lntvalves.com for the latest publication.

