

## Forbes Marshall Moisture Separator - Flanged

### Description

The Forbes Marshall Moisture Separator, FMSEP54, is a carbon steel baffle type separator used for the removal of entrained liquids in steam, so that they can be drained away as condensate.

### Sizes and Connections

Sizes: DN 25, 40, 50, 65, 80, 100, 125, 150 and 200

#### Flange Connections

BS 10 Table F, H, J, K, ASME B 16.5  
Class 150, 300, PN 10, 16, 25 and 40

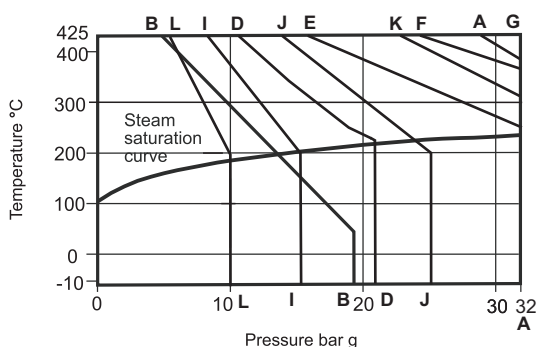
**Notes :** Available with IBR test certificates, on request.  
Optional insulation packs are available which will increase the performance of the separator.

### Limiting Conditions

Body design condition	32 bar g at 425 °C
Cold hydraulic test pressure	64 bar g

Flange Types	Max. Working Pressure	Max. Working Temp.
TAB 'F'	21 bar g at 232 °C	425 °C at 10.5 bar g
TAB 'H'	32 bar g at 232 °C	425 °C at 17 bar g
TAB 'J'	32 bar g at 232 °C	425 °C at 24 bar g
TAB 'K'	32 bar g at 232 °C	425 °C at 31 bar g
ASA 150	19.6 bar g at 38 °C	425 °C at 5.5 bar g
ASA 300	51.1 bar g at 38 °C	425 °C at 28.8 bar g
PN 10	10 bar g at 200 °C	425 °C at 5.65 bar g
PN 16	16 bar g at 200 °C	425 °C at 9.1 bar g
PN 25	25 bar g at 200 °C	425 °C at 14.25 bar g
PN 40	40 bar g at 200 °C	425 °C at 22.8 bar g

### Operating Range

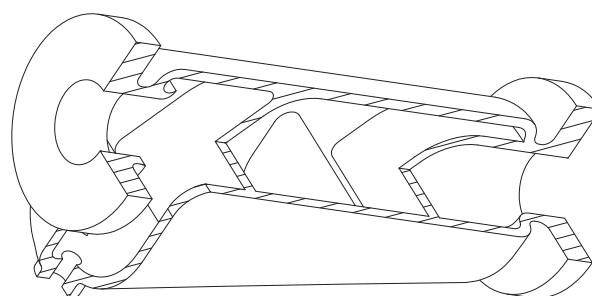
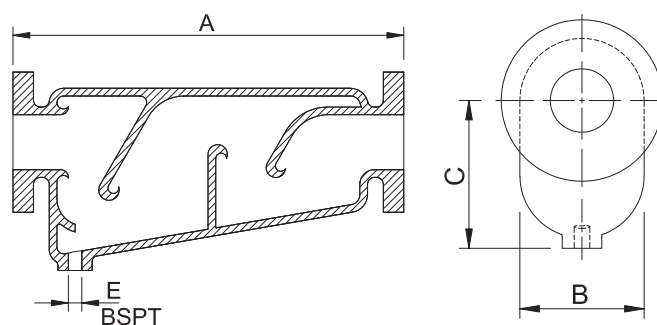


<b>A-A</b> Flanged ANSI 300	<b>G-A</b> BS10 Table K
<b>B-B</b> Flanged ANSI 150	<b>L-L</b> PN 10
<b>D-D</b> BS10 Table F	<b>I-I</b> PN 16
<b>E-A</b> BS10 Table H	<b>J-J</b> PN 25
<b>F-A</b> BS10 Table J	<b>K-A</b> PN 40

### Dimensions: (approx.) in mm

Sizes DN	Dimensions			Weight	Kg
	A	B	C	E	
25	280	70	100	20	14
40	390	89	111	20	22
50	472	120.5	146	25	32
65	405	146	171	20	40
80	510	152.4	174	25	69
100	720	200	238	25	114
125	705	354	233	25	184
150	720	375	232	25	200
200	762	416	308	40	300

General Tolerance: ±3



### How to Order

**Example:** 1 no. DN 40 Forbes Marshall Moisture Separator C.S. FMSEP54 Flanged BS 10 Table "K" IBR

### Installation

Install in a horizontal pipeline with the drain directly below.

**Note:** To ensure that any separated liquid is drained away quickly, a suitable steam trap must be connected to the drain connection. Consult Forbes Marshall for further details.



**Forbes Marshall**  
B-85, Phase II, Chakan Industrial Area  
Sawardari, Chakan  
Tal. Khed, Dist. Pune 410501. INDIA.  
Tel : +91 02135 393400

**Forbes Marshall Steam Systems Pvt. Ltd.**  
**(Formerly Spirax Marshall Pvt. Ltd.)**  
Regd Office: Opp 106th Milestone  
Bombay Poona Road, Kasarwadi,  
Pune 411 034. INDIA.  
Tel.: 91(0)20-27145595, 39858555  
CIN No : U27109PN1959PTC011334



Email : [seg@forbesmarshall.com](mailto:seg@forbesmarshall.com)

[www.forbesmarshall.com](http://www.forbesmarshall.com)