

# FMTD76-M

## Forbes Marshall Thermodynamic Trap

### Description

The Forbes Marshall Thermodynamic Trap, FMTD76-M, is a maintainable high pressure thermodynamic steam trap with integral strainers and a replaceable seat to ease maintenance. It has been specifically designed for main drainage application up to 62 bar g. An insulating cover is fitted as standard to prevent the trap being unduly influenced by excessive heat loss when subjected to low outside temperature, wind, rain etc.

### Size and Pipe Connections

DN 15 and DN 20

Screwed BSPT/NPT/BSP and socket weldable ends

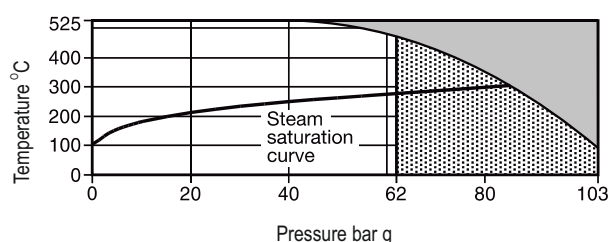
### Notes

1. Available with Class 150, 300 and 600 weld on flanges on request
2. Available with IBR certificate.

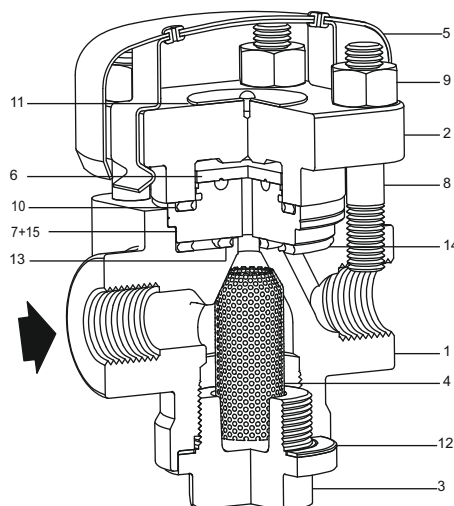
### Limiting Conditions

Body designed conditions	ANSI 600
PMA Max. Allowable pressure	103 bar g @ 93°C
TMA Max. allowable temperature	525°C @ 42.7 bar g
Minimum allowable temperature	0°C
PMO Maximum operating pressure for steam service	62 bar g @ 482°C
PMOB Maximum operating backpressure	80% of steam pressure
Minimum operating pressure	1.4 bar g
Designed for a maximum cold hydraulic test pressure of	124 bar g

### Operating Range



- The product must not be used in this region.
- ▨ The product should not be used in this region or beyond its operating range as damage to the internals may occur.



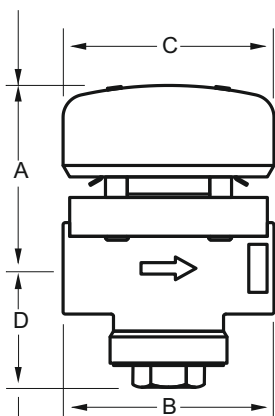
No	Part	Material	Standard
1	Body	Steel	ASTMA 217 Gr. WC6
2	Cover	Steel	ASTMA 217 Gr. WC6
3	Strainer cap	Steel	ASTMA 217 Gr. WC6
4	Strainer screen	Stainless Steel	ASTM 240 Gr. 316
5	Insulating cover	Aluminum	
6	Disc	Chromium Steel	BS 4659 Gr. BD 2
7	Seat	Chromium Steel	BS 4659 Gr. BD 2
8	Cover studs	Steel	ASTMA 193 Gr. B16
9	Cover nuts	Steel	ASTMA 194 Gr. 8M
10	Cover gasket	Spiral wound SS with exfoliated graphite	
11	Name plate	Stainless steel	ASTMA 240 SS 304
12	Strainer cap gasket	Reinforced exfoliated graphite	
13	Inner seat gasket	Spiral wound SS with exfoliated graphite	
14	Outer seat gasket	Spiral wound SS with exfoliated graphite	
15	Ferrule	Stainless steel	

**Note :** Item 15 (ferrule) is pressed into item 7 (seat)

### Installation



Preferably install in horizontal pipeline with insulating cover uppermost although it can be fitted in other positions. After 24 hours in service the cover nuts should be checked for tightness. Separate installation and maintenance instruction give full details connections.

F Withdrawal distance



E Withdrawal distance

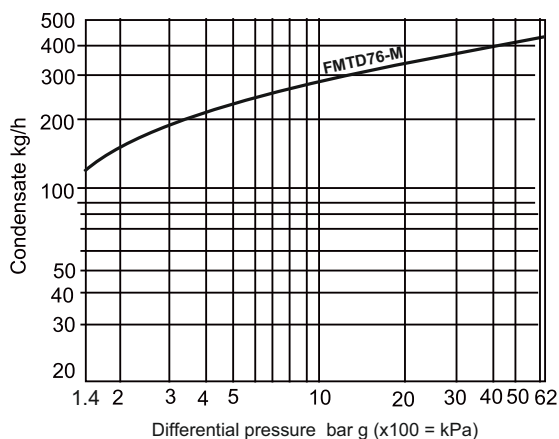
#### Recommended Tightening Torques

Item no	 Or  mm	Nm
3	32 A/F	142-158
8	M10 X1.5	20-25
9	17 A/F	45-50

#### Dimensions (approx.) in mm and weight in kg

Size	A	B	C	D	E	F	Weight
DN15	80	92	92	52	20	51	2.08
DN20	80	92	92	52	20	51	2.08

#### Capacity Chart



#### How To Order

**Example :** DN 15 Forbes Marshall thermodynamic trap FMTD76-M with integral strainer with screwed BSPT

#### Spare parts

The spare parts available are shown in solid outline. Parts drawn in broken line are not supplied as spares.

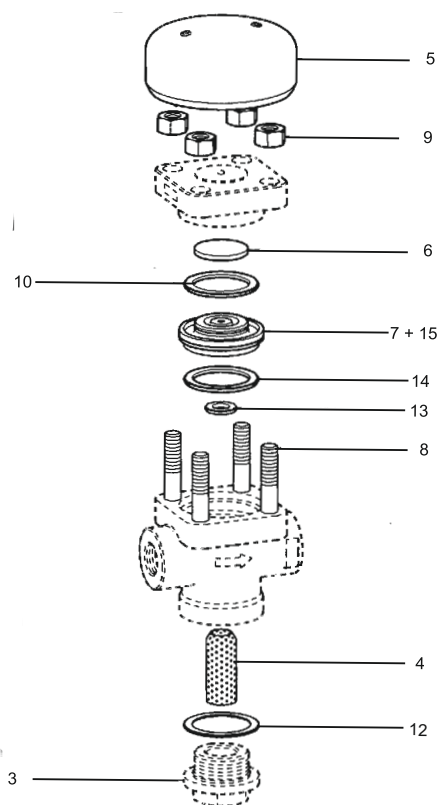
#### How to Order Spares

Always order spares by using the description given in the column headed "Available Spares".

**Example :** 1 No. strainer for Forbes Marshall thermodynamic trap FMTD76-M.

#### Available Spares

Insulating cover	5
Set of cover studs and nuts (set of 4)	8,9
Seat and disc assembly	6,7,10,13,14,15
Strainer screen	4
Set of gaskets (packet of 3 sets)	10,12,13,14
Strainer cap gasket (3 off)	12



Forbes Marshall  
Krohne Marshall  
Forbes Marshall Arca  
Codel International  
Forbes Solar  
Forbes Vyncke  
Forbes Marshall Steam Systems

Opp 106th Milestone  
Bombay Poona Road  
Kasarwadi, Pune - 411 034. INDIA  
Tel : 91(0)20-27145595, 39858555  
Fax : 91(0)20-27147413

Email : seg@forbesmarshall.com, ccmidc@forbesmarshall.com

© All rights reserved. Any reproduction or distribution in part or as a whole without written permission of Forbes Marshall Pvt Ltd, its associate companies or its subsidiaries ("FM Group") is prohibited.

Information, designs or specifications in this document are subject to change without notice. Responsibility for suitability, selection, installation, use, operation or maintenance of the product(s) rests solely with the purchaser and/or user. The contents of this document are presented for informational purposes only. FM Group disclaims liabilities or losses that may be incurred as a consequence of the use of this information.

B-85, Phase II, Chakan Indl Area  
Sawardari, Chakan, Tal. Khed  
Dist. Pune - 410 501. INDIA  
Tel : 91(0)2135-393400

A-34/35, MIDC H Block  
Pimpri, Pune - 411 018. INDIA.  
Tel : 91(0)20-27442020, 39851199  
Fax : 91(0)20-27442040

CIN No.: U28996PN1985PTC037806  
www.forbesmarshall.com